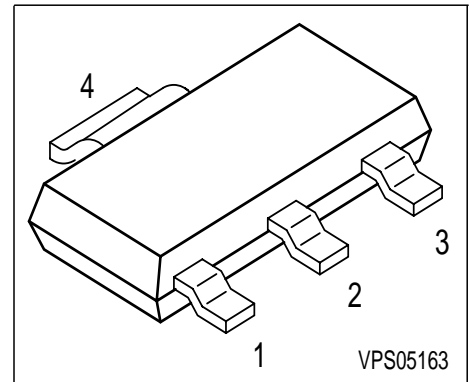


**NPN Silicon Darlington Transistors**

- High collector current
- Low collector-emitter saturation voltage
- Complementary types: BSP60 ... BSP62 (PNP)



Type	Marking	Pin Configuration				Package
BSP50	BSP 50	1 = B	2 = C	3 = E	4 = C	SOT223
BSP51	BSP 51	1 = B	2 = C	3 = E	4 = C	SOT223
BSP52	BSP 52	1 = B	2 = C	3 = E	4 = C	SOT223

**Maximum Ratings**

Parameter	Symbol	BSP50	BSP51	BSP52	Unit
Collector-emitter voltage	$V_{CEO}$	45	60	80	V
Collector-base voltage	$V_{CBO}$	60	80	90	
Emitter-base voltage	$V_{EBO}$	5	5	5	
DC collector current	$I_C$	1			A
Peak collector current	$I_{CM}$	2			
Base current	$I_B$	100			mA
Total power dissipation, $T_S = 124\text{ °C}$	$P_{tot}$	1.5			W
Junction temperature	$T_j$	150			°C
Storage temperature	$T_{stg}$	-65 ... 150			

**Thermal Resistance**

Junction - soldering point <sup>1)</sup>	$R_{thJS}$	≤17	K/W
--	------------	-----	-----

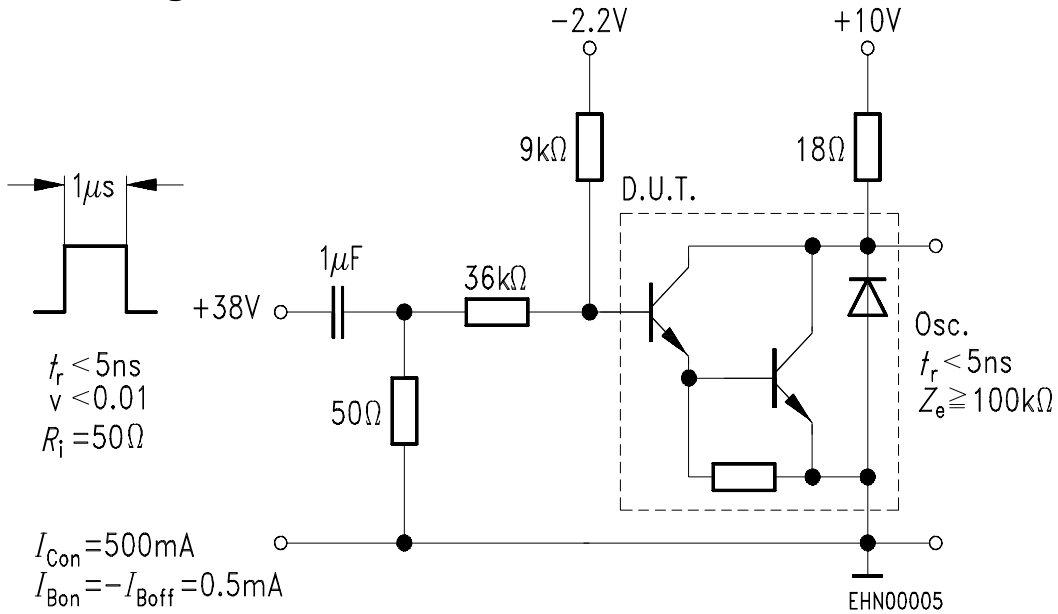
<sup>1)</sup>For calculation of  $R_{thJA}$  please refer to Application Note Thermal Resistance

**Electrical Characteristics** at  $T_A = 25^\circ\text{C}$ , unless otherwise specified

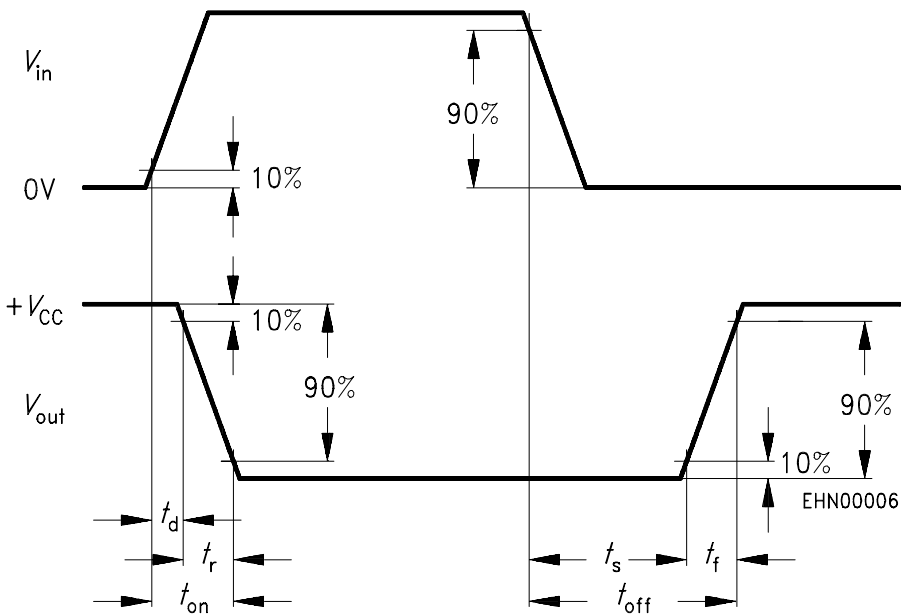
Parameter	Symbol	Values			Unit
		min.	typ.	max.	
<b>DC Characteristics</b>					
Collector-emitter breakdown voltage $I_C = 10\text{ mA}, I_B = 0$	$V_{(BR)CEO}$				V
BSP50		45	-	-	
BSP51		60	-	-	
BSP52		80	-	-	
Collector-base breakdown voltage $I_C = 100\text{ }\mu\text{A}, I_E = 0$	$V_{(BR)CBO}$				
BSP50		60	-	-	
BSP51		80	-	-	
BSP52		90	-	-	
Emitter-base breakdown voltage $I_E = 100\text{ }\mu\text{A}, I_C = 0$	$V_{(BR)EBO}$	5	-	-	
Collector-emitter cutoff current $V_{CE} = V_{CE0max}, V_{BE} = 0$	$I_{CES}$	-	-	10	$\mu\text{A}$
Emitter cutoff current $V_{EB} = 4\text{ V}, I_C = 0$	$I_{EBO}$	-	-	10	
DC current gain 1) $I_C = 150\text{ mA}, V_{CE} = 10\text{ V}$ $I_C = 500\text{ mA}, V_{CE} = 10\text{ V}$	$h_{FE}$	1000 2000	- -	- -	-
Collector-emitter saturation voltage1) $I_C = 500\text{ mA}, I_B = 0.5\text{ mA}$ $I_C = 1\text{ A}, I_B = 1\text{ mA}$	$V_{CEsat}$	- -	- -	1.3 1.8	V
Base-emitter saturation voltage 1) $I_C = 500\text{ mA}, I_B = 0.5\text{ mA}$ $I_C = 1\text{ A}, I_B = 1\text{ mA}$	$V_{BEsat}$	- -	- -	1.9 2.2	
<b>AC Characteristics</b>					
Transition frequency $I_C = 100\text{ mA}, V_{CE} = 5\text{ V}, f = 100\text{ MHz}$	$f_T$	-	200	-	MHz
Turn-on time $I_C = 500\text{ mA}, I_{B1} = I_{B2} = 0.5\text{ mA}$	$t_{(on)}$	-	400	-	ns
Turn-off time $I_C = 500\text{ mA}, I_{B1} = I_{B2} = 0.5\text{ mA}$	$t_{(off)}$	-	1500	-	

 1) Pulse test:  $t \leq 300\mu\text{s}$ ,  $D = 2\%$

### Switching time test circuit

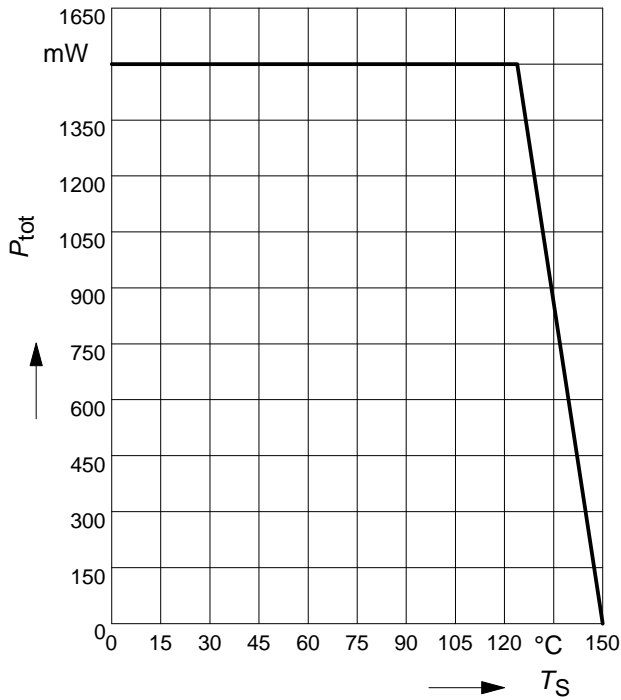


### Switching time waveform



1) Pulse test:  $t \leq 300\mu\text{s}$ ,  $D = 2\%$

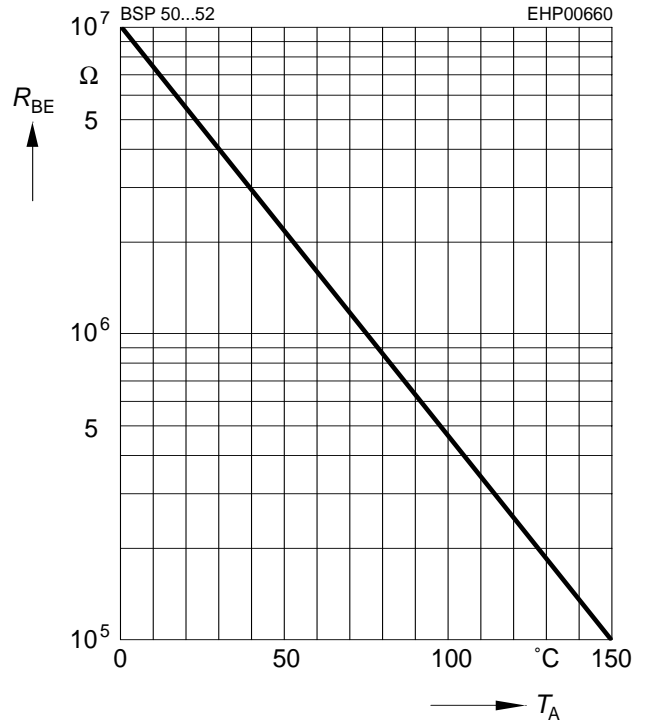
**Total power dissipation  $P_{tot} = f(T_S)$**



**External resistance  $R_{BE} = f(T_A)$ \*\***

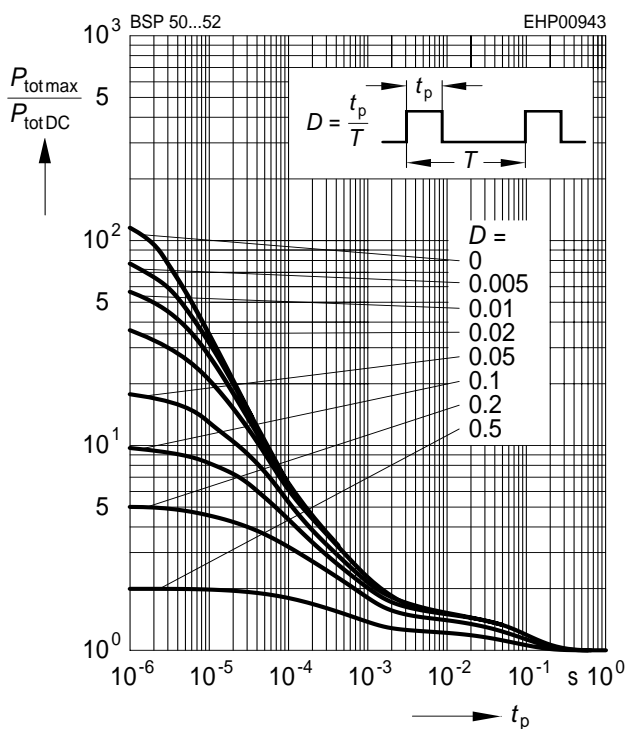
$V_{CB} = V_{CEmax}$

\*\*  $R_{BEmax}$  for thermal stability



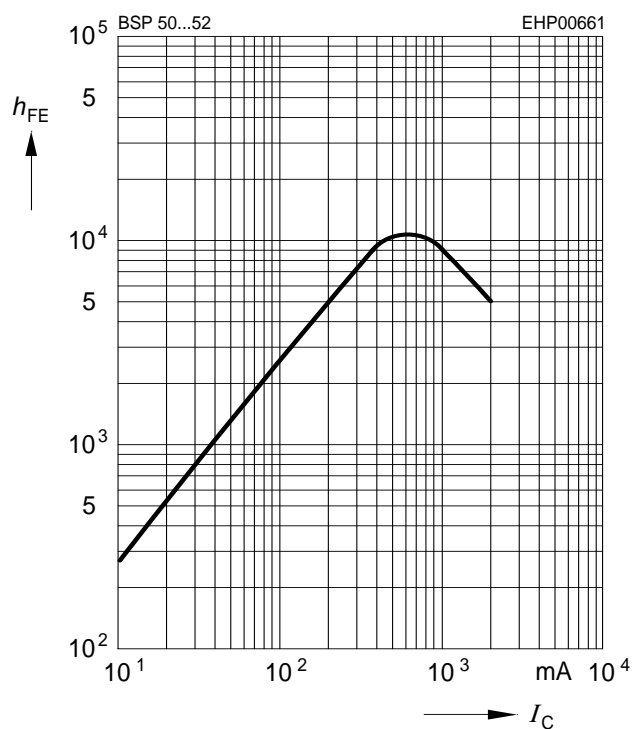
**Permissible pulse load**

$P_{totmax} / P_{totDC} = f(t_p)$



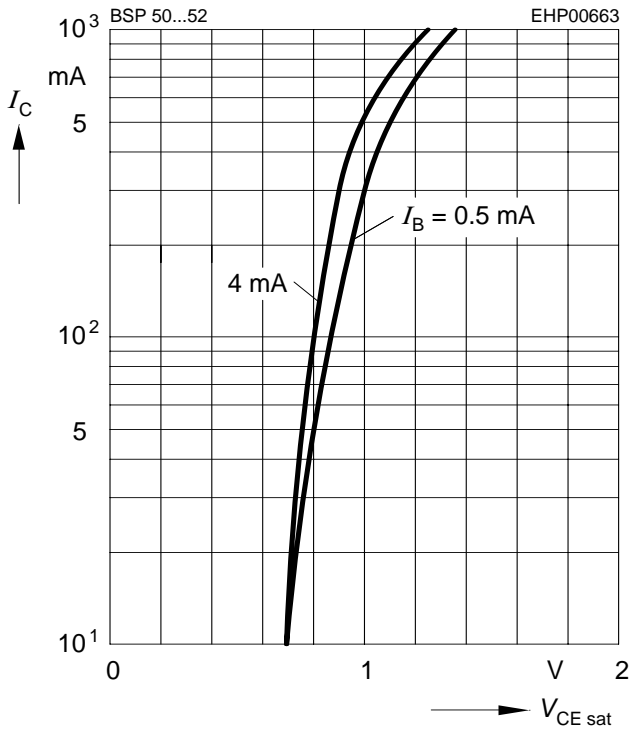
**DC current gain  $h_{FE} = f(I_C)$**

$V_{CE} = 10V$



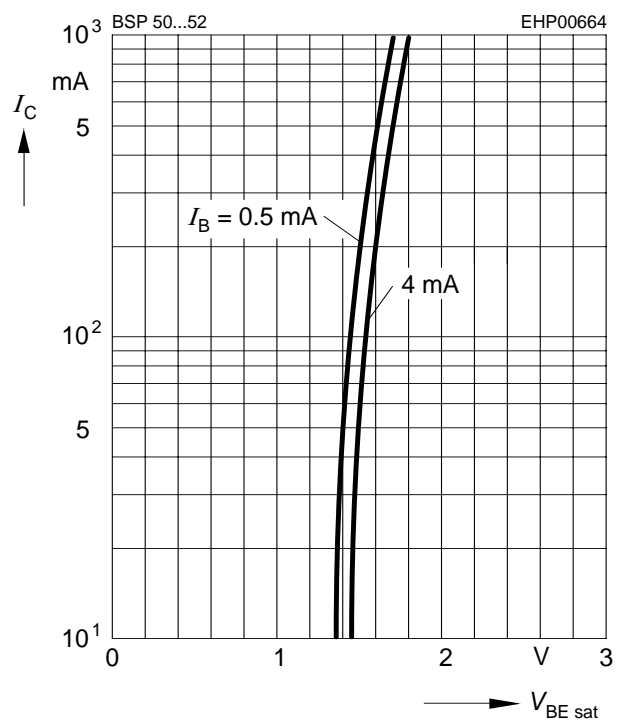
**Collector-emitter saturation voltage**

$I_C = f(V_{CEsat}), I_B$  - parameter



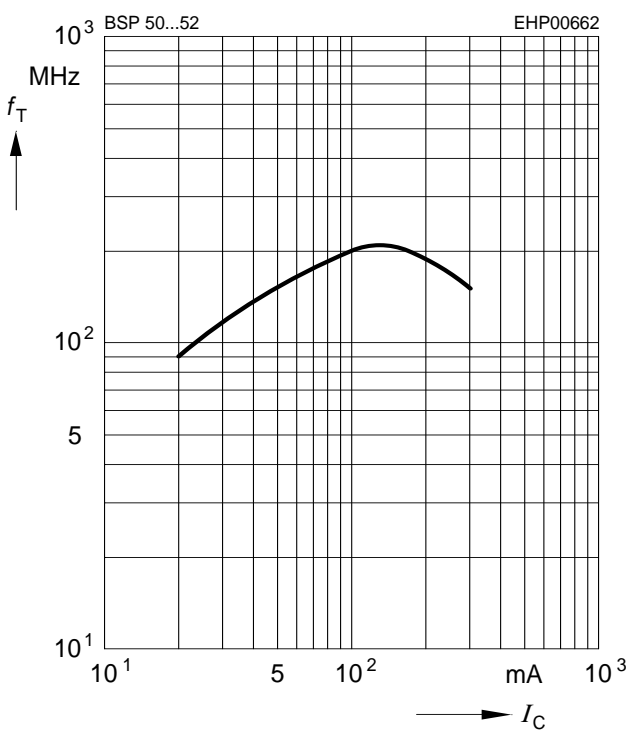
**Base-emitter saturation voltage**

$I_C = f(V_{BEsat}), I_B$  - parameter

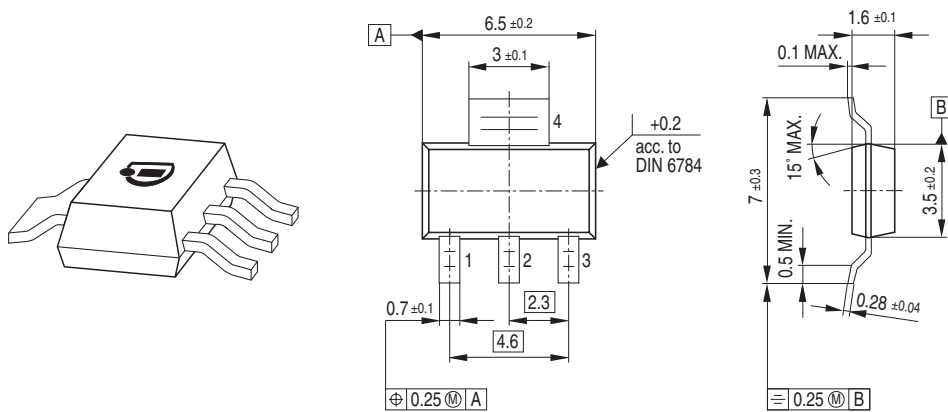


**Transition frequency  $f_T = f(I_C)$**

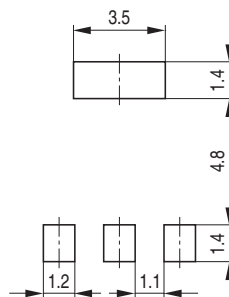
$V_{CE} = 5V, f = 100MHz$



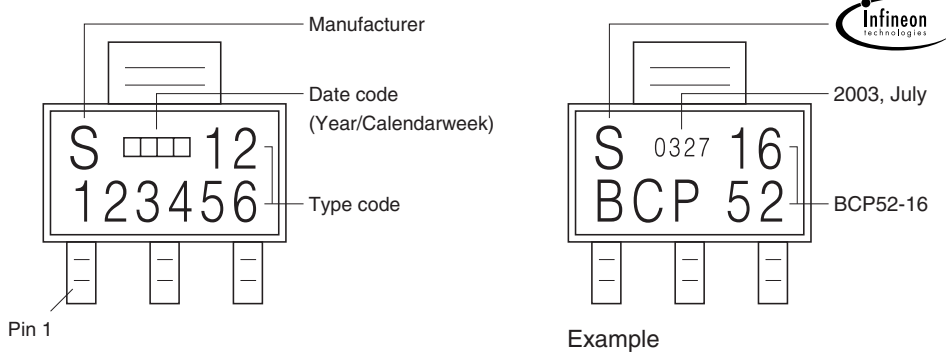
### Package Outline



### Foot Print

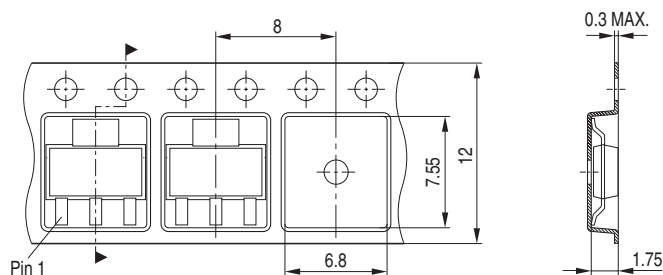


### Marking Layout



### Packing

Code E6327: Reel  $\varnothing 180$  mm = 1.000 Pieces/Reel  
 Code E6433: Reel  $\varnothing 330$  mm = 4.000 Pieces/Reel



Published by Infineon Technologies AG,  
St.-Martin-Strasse 53,  
81669 München  
© Infineon Technologies AG 2005.  
All Rights Reserved.

### **Attention please!**

The information herein is given to describe certain components and shall not be considered as a guarantee of characteristics.

Terms of delivery and rights to technical change reserved.

We hereby disclaim any and all warranties, including but not limited to warranties of non-infringement, regarding circuits, descriptions and charts stated herein.

### **Information**

For further information on technology, delivery terms and conditions and prices please contact your nearest Infineon Technologies Office ([www.infineon.com](http://www.infineon.com)).

### **Warnings**

Due to technical requirements components may contain dangerous substances. For information on the types in question please contact your nearest Infineon Technologies Office.

Infineon Technologies Components may only be used in life-support devices or systems with the express written approval of Infineon Technologies, if a failure of such components can reasonably be expected to cause the failure of that life-support device or system, or to affect the safety or effectiveness of that device or system. Life support devices or systems are intended to be implanted in the human body, or to support and/or maintain and sustain and/or protect human life. If they fail, it is reasonable to assume that the health of the user or other persons may be endangered.