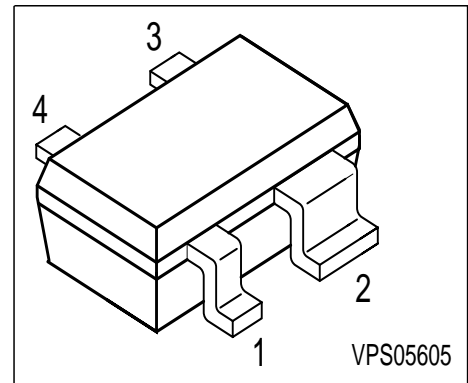
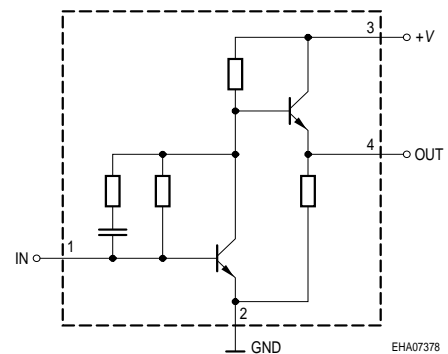


Si-MMIC-Amplifier in SIEGET 25-Technologie

- Cascadable 50 Ω-gain block
- Unconditionally stable
- Gain $|S_{21}|^2 = 18.5$ dB at 1.8 GHz (Appl.1)
gain $|S_{21}|^2 = 22$ dB at 1.8 GHz (Appl.2)
 $IP_{3out} = +7$ dBm at 1.8 GHz ($V_D=3V$, $I_D=9.4mA$)
- Noise figure $NF = 2.2$ dB at 1.8 GHz
- Typical device voltage $V_D = 2$ V to 5 V
- Reverse isolation > 35 dB (Appl.2)



Circuit Diagram



ESD: Electrostatic discharge sensitive device, observe handling precaution!

| Type | Marking | Pin Configuration | | | | Package |
|--------|---------|-------------------|--------|-------|--------|---------|
| BGA427 | BMs | 1, IN | 2, GND | 3, +V | 4, Out | SOT343 |

Maximum Ratings

| Parameter | Symbol | Value | Unit |
|---|------------|-------------|------|
| Device current | I_D | 25 | mA |
| Device voltage | $V_{D,+V}$ | 6 | V |
| Total power dissipation $T_S = 120$ °C | P_{tot} | 150 | mW |
| RF input power | P_{RFIn} | -10 | dBm |
| Junction temperature | T_j | 150 | °C |
| Ambient temperature range | T_A | -65 ... 150 | |
| Storage temperature range | T_{stg} | -65 ... 150 | |

Thermal Resistance

| | | | |
|--|------------|------------|-----|
| Junction - soldering point ¹⁾ | R_{thJS} | ≤ 295 | K/W |
|--|------------|------------|-----|

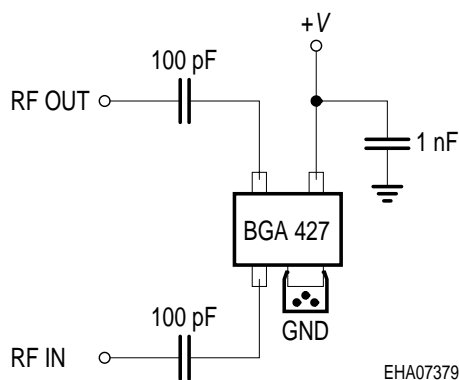
¹⁾For calculation of R_{thJA} please refer to Application Note Thermal Resistance

Electrical Characteristics at $T_A = 25\text{ }^\circ\text{C}$, unless otherwise specified.

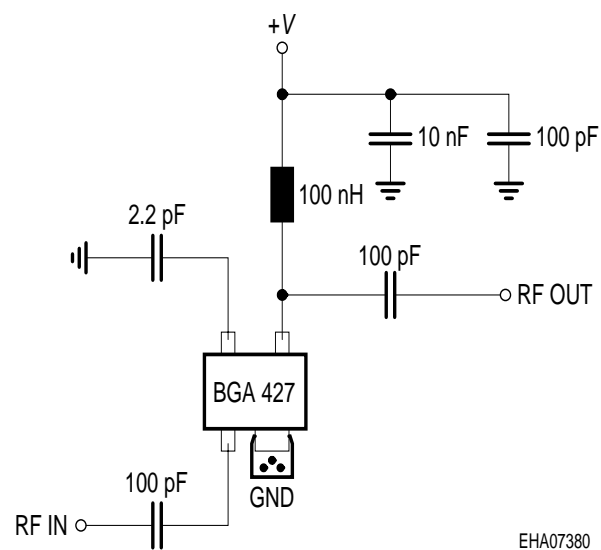
| Parameter | Symbol | Values | | | Unit |
|--|--------------|--------|------|------|------|
| | | min. | typ. | max. | |
| AC characteristics $V_D = 3\text{ V}$, $Z_0 = 50\Omega$, Testfixture Appl.1 | | | | | |
| Insertion power gain $f = 0.1\text{ GHz}$ $f = 1\text{ GHz}$ $f = 1.8\text{ GHz}$ | $ S_{21} ^2$ | - | 27 | - | dB |
| Reverse isolation $f = 1.8\text{ GHz}$ | S12 | - | 22 | - | |
| Noise figure $f = 0.1\text{ GHz}$ $f = 1\text{ GHz}$ $f = 1.8\text{ GHz}$ | NF | - | 1.9 | - | |
| Intercept point at the output $f = 1.8\text{ GHz}$ | IP_{3out} | - | +7 | - | dBm |
| Return loss input $f = 1.8\text{ GHz}$ | RL_{in} | - | >12 | - | dB |
| Return loss output $f = 1.8\text{ GHz}$ | RL_{out} | - | >9 | - | |

Typical configuration

Appl.1



Appl.2



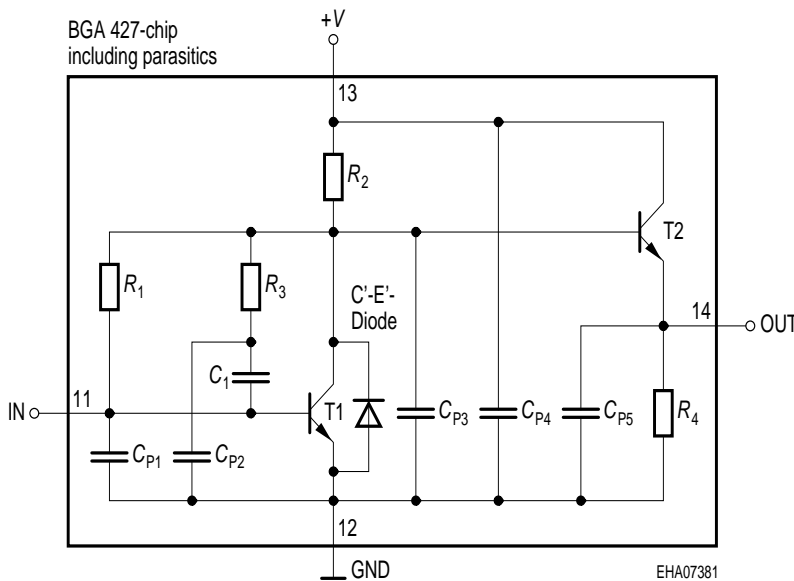
Note: 1) Large-value capacitors should be connected from pin 3 to ground right at the device to provide a low impedance path (appl.1).

2) The use of plated through holes right at pin 2 is essential for pc-board-applications. Thin boards are recommended to minimize the parasitic inductance to ground.

S-Parameters at $T_A = 25\text{ °C}$, (Testfixture, Appl.1)

| f | S_{11} | | S_{21} | | S_{12} | | S_{22} | |
|----------------------------|----------|--------|----------|-------|----------|------|----------|-------|
| | MAG | ANG | MAG | ANG | MAG | ANG | MAG | ANG |
| $V_D = 3V, Z_0 = 50\Omega$ | | | | | | | | |
| 0.1 | 0.1382 | -38.3 | 24.821 | 164.9 | 0.0022 | 50.7 | 0.6435 | 174.8 |
| 0.2 | 0.1179 | -16 | 24.606 | 158.9 | 0.0046 | 71.8 | 0.6278 | 166.9 |
| 0.5 | 0.1697 | -20.8 | 22.236 | 135.2 | 0.0104 | 83.8 | 0.54 | 147.3 |
| 0.8 | 0.1824 | -56.9 | 18.258 | 115.4 | 0.0169 | 94.8 | 0.4453 | 140.2 |
| 0.9 | 0.1782 | -69.1 | 17.152 | 109.4 | 0.0194 | 97.3 | 0.4326 | 139.4 |
| 1 | 0.176 | -80.6 | 15.786 | 104 | 0.0225 | 98.3 | 0.4129 | 138.1 |
| 1.5 | 0.1827 | -133.5 | 10.923 | 84.9 | 0.0385 | 99.7 | 0.3852 | 139.6 |
| 1.8 | 0.1969 | -156.1 | 9.029 | 77 | 0.0479 | 99.3 | 0.3917 | 139.3 |
| 1.9 | 0.2021 | -162.8 | 8.486 | 74.7 | 0.0517 | 98.9 | 0.3946 | 138.8 |
| 2 | 0.2116 | -167.7 | 8.015 | 72.3 | 0.0549 | 98.8 | 0.3991 | 138.3 |
| 2.5 | 0.2437 | 172.8 | 6.259 | 63 | 0.0709 | 97.1 | 0.4202 | 134.6 |
| 3 | 0.258 | 153.3 | 5.103 | 55 | 0.0892 | 96.9 | 0.4477 | 131 |

Spice-model BGA 427



| | |
|-------------|----------------|
| T1 | T501 |
| T2 | T501 |
| R_1 | 14.5k Ω |
| R_2 | 280 Ω |
| R_3 | 2.4k Ω |
| R_4 | 170 Ω |
| C_1 | 2.3pF |
| C_{P1} | 0.2pF |
| C_{P2} | 0.2pF |
| C_{P3} | 0.6pF |
| C_{P4} | 0.1pF |
| C_{P5} | 0.1pF |
| C'-E'-diode | T1 |

Transistor Chip Data T1 (Berkley-SPICE 2G.6 Syntax) :

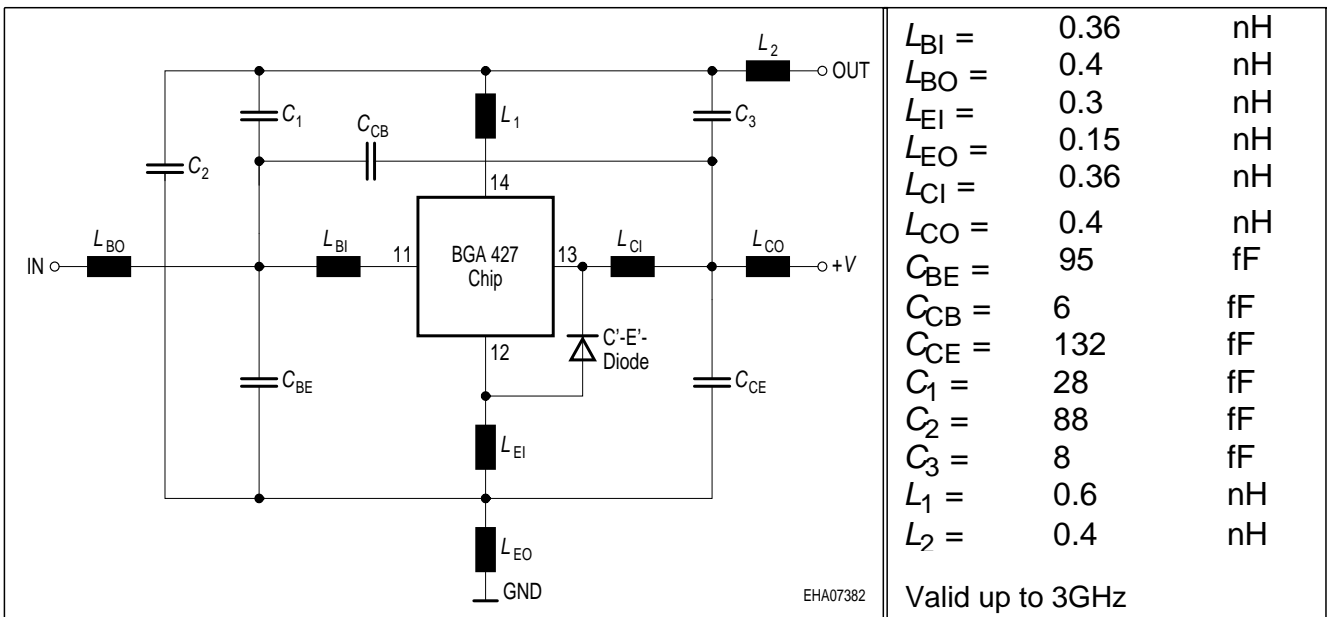
| | | | | | | | | |
|-------|---------|----------|-------|---------|----------|--------|----------|----------|
| IS = | 0.21024 | fA | BF = | 83.23 | - | NF = | 1.0405 | - |
| VAF = | 39.251 | V | IKF = | 0.16493 | A | ISE = | 15.761 | fA |
| NE = | 1.7763 | - | BR = | 10.526 | - | NR = | 0.96647 | - |
| VAR = | 34.368 | V | IKR = | 0.25052 | A | ISC = | 0.037223 | fA |
| NC = | 1.3152 | - | RB = | 15 | Ω | IRB = | 0.21215 | A |
| RBM = | 1.3491 | Ω | RE = | 1.9289 | | RC = | 0.12691 | Ω |
| CJE = | 3.7265 | fF | VJE = | 0.70367 | V | MJE = | 0.37747 | - |
| TF = | 4.5899 | ps | XTF = | 0.3641 | - | VTF = | 0.19762 | V |
| ITF = | 1.3364 | mA | PTF = | 0 | deg | CJC = | 96.941 | fF |
| VJC = | 0.99532 | V | MJC = | 0.48652 | - | XCJC = | 0.08161 | - |
| TR = | 1.4935 | ns | CJS = | 0 | fF | VJS = | 0.75 | V |
| MJS = | 0 | - | XTB = | 0 | - | EG = | 1.11 | eV |
| XTI = | 3 | - | FC = | 0.99469 | - | TNOM | 300 | K |

C'-E'-Diode Data (Berkley-SPICE 2G.6 Syntax) :

| | | | | | | | | |
|------|---|----|-----|------|---|------|----|----------|
| IS = | 2 | fA | N = | 1.02 | - | RS = | 20 | Ω |
|------|---|----|-----|------|---|------|----|----------|

All parameters are ready to use, no scaling is necessary

Package Equivalent Circuit:

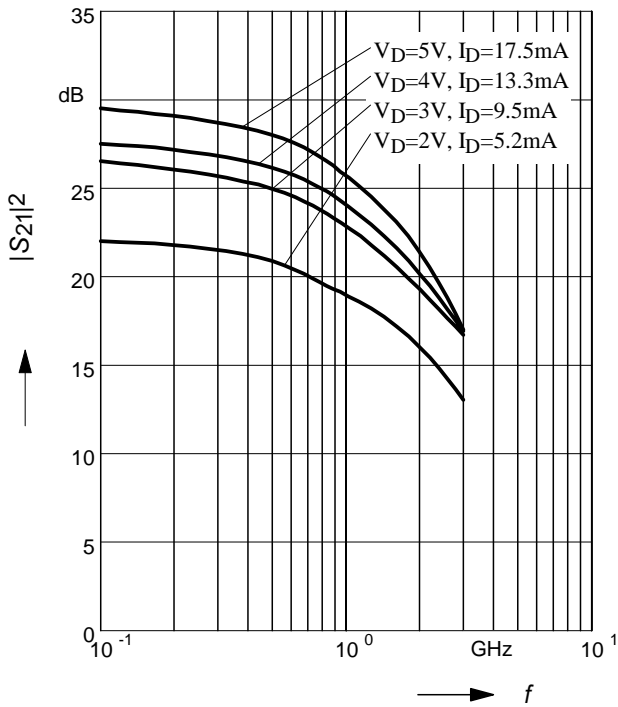


Extracted on behalf of Infineon Technologies AG by:
 Institut für Mobil-und Satellitentechnik (IMST)

For examples and ready to use parameters please contact your local Infineon Technologies distributor or sales office to obtain a Infineon Technologies CD-ROM or see Internet:
<http://www.infineon.com/silicondiscretes>

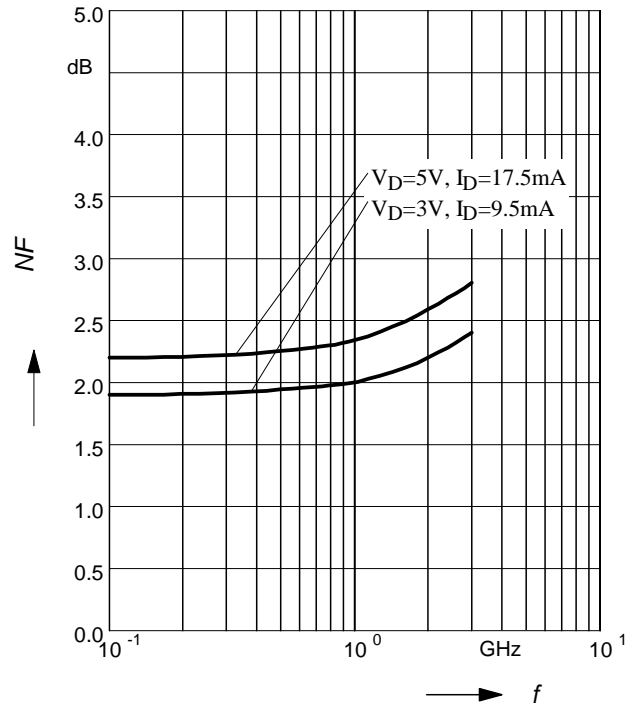
Insertion power gain $|S_{21}|^2 = f(f)$

$V_D, I_D = \text{parameter}$



Noise figure $NF = f(f)$

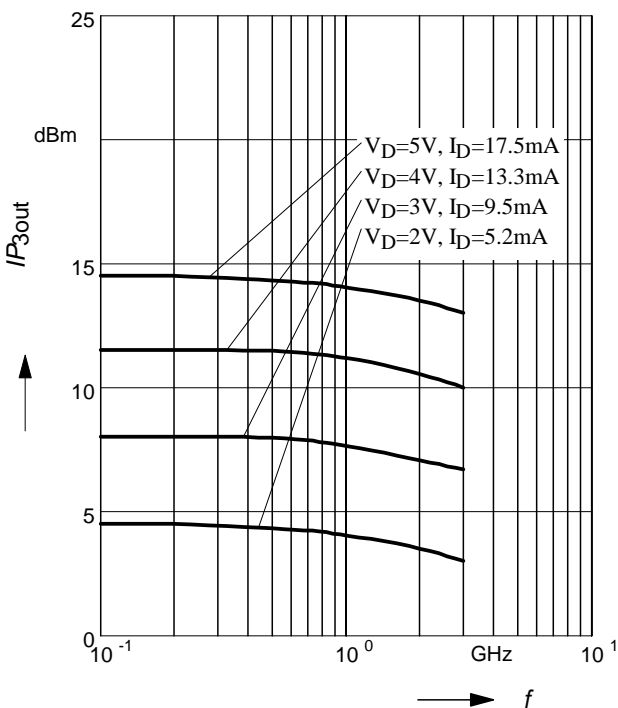
$V_D, I_D = \text{parameter}$



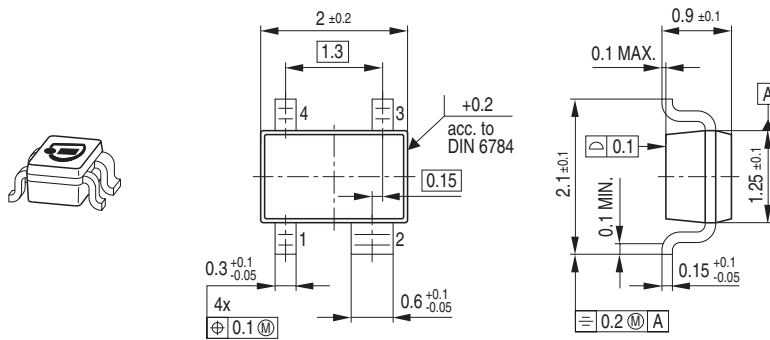
Intercept point at the output

$IP_{3out} = f(f)$

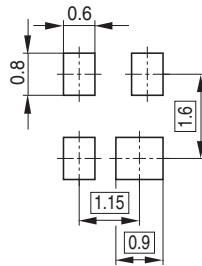
$V_D, I_D = \text{parameter}$



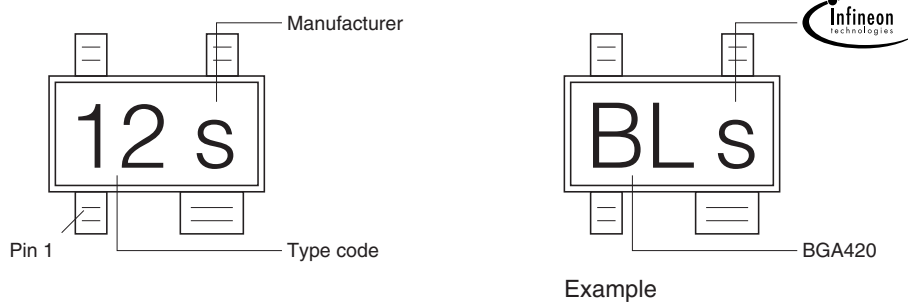
Package Outline



Foot Print

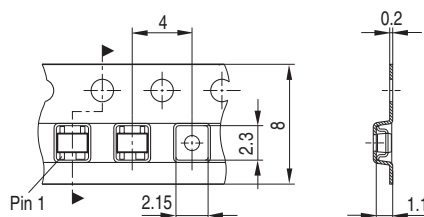


Marking Layout



Packing

Code E6327: Reel ø180 mm = 3.000 Pieces/Reel
 Code E6433: Reel ø330 mm = 10.000 Pieces/Reel



Published by Infineon Technologies AG,
St.-Martin-Strasse 53,
81669 München
© Infineon Technologies AG 2005.
All Rights Reserved.

Attention please!

The information herein is given to describe certain components and shall not be considered as a guarantee of characteristics.

Terms of delivery and rights to technical change reserved.

We hereby disclaim any and all warranties, including but not limited to warranties of non-infringement, regarding circuits, descriptions and charts stated herein.

Information

For further information on technology, delivery terms and conditions and prices please contact your nearest Infineon Technologies Office (www.infineon.com).

Warnings

Due to technical requirements components may contain dangerous substances. For information on the types in question please contact your nearest Infineon Technologies Office.

Infineon Technologies Components may only be used in life-support devices or systems with the express written approval of Infineon Technologies, if a failure of such components can reasonably be expected to cause the failure of that life-support device or system, or to affect the safety or effectiveness of that device or system. Life support devices or systems are intended to be implanted in the human body, or to support and/or maintain and sustain and/or protect human life. If they fail, it is reasonable to assume that the health of the user or other persons may be endangered.