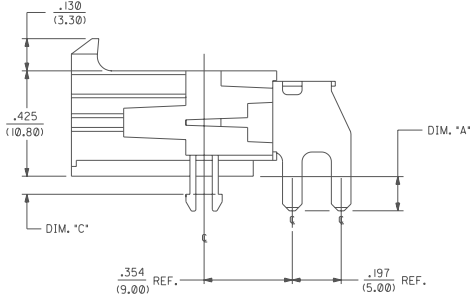
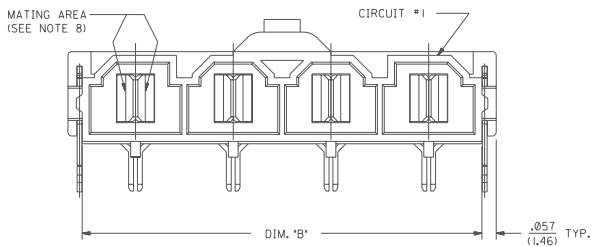
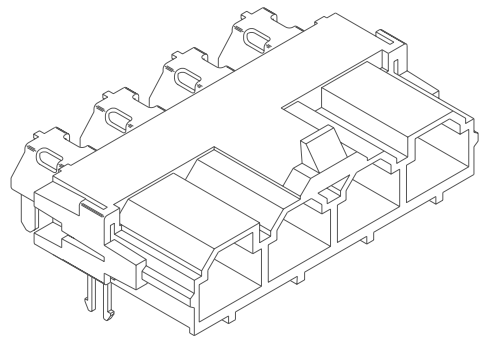
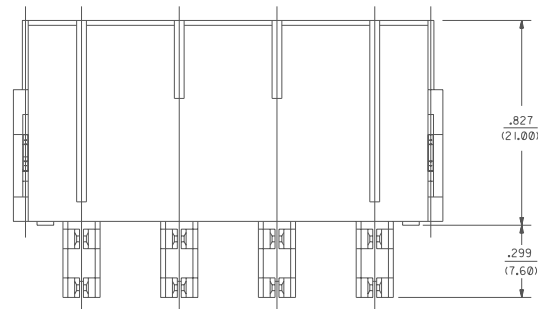


Molex 42820 Series Right Angle Header Assembly (Mini-Fit, Sr. Series)

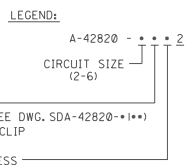
ITEM NUMBER	CKT. SIZE	DIM. "A"	DIM. "B"	DIM. "C"
42820-2212	2	.138/(3.50)	.823/(20.90)	.071/(1.80)
42820-2222	2	.201/(5.10)	.823/(20.90)	.102/(2.60)
42820-2232	2	.201/(5.10)	.823/(20.90)	.134/(3.40)
42820-3212	3	.138/(3.50)	1.217/(30.90)	.071/(1.80)
42820-3222	3	.201/(5.10)	1.217/(30.90)	.102/(2.60)
42820-3232	3	.201/(5.10)	1.217/(30.90)	.134/(3.40)
42820-4212	4	.138/(3.50)	1.610/(40.90)	.071/(1.80)
42820-4222	4	.201/(5.10)	1.610/(40.90)	.102/(2.60)
42820-4232	4	.201/(5.10)	1.610/(40.90)	.134/(3.40)
42820-5212	5	.138/(3.50)	2.004/(50.90)	.071/(1.80)
42820-5222	5	.201/(5.10)	2.004/(50.90)	.102/(2.60)
42820-5232	5	.201/(5.10)	2.004/(50.90)	.134/(3.40)
42820-6212	6	.138/(3.50)	2.389/(60.90)	.071/(1.80)
42820-6222	6	.201/(5.10)	2.389/(60.90)	.102/(2.60)
42820-6232	6	.201/(5.10)	2.389/(60.90)	.134/(3.40)



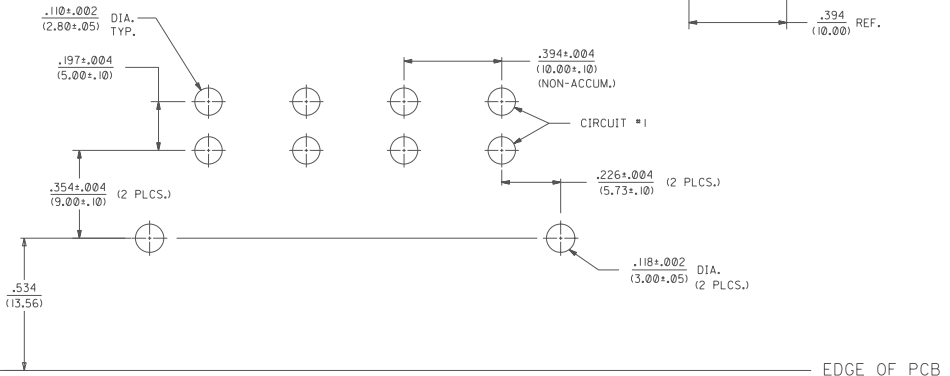
- NOTES:
- HOUSING MATERIAL: 30% GLASS-FILLED NYLON 4/6, U.L. 94V-0, COLOR: BLACK.
  - TERMINAL MATERIAL: ALLOY 151.
  - PART MATES WITH MOLEX RECEPTACLE #42816-\*\*\*2 WITH TPA.
  - PART IS DESIGNED IN METRIC.
  - AN "X" IN FRONT OF THE ITEM NUMBER INDICATES THE PART IS NOT TOOLED.
  - TERMINAL PLATING : .000100/(.00254) MIN. TIN-LEAD (90/10) OVER .000030/(.00076) MIN. NICKEL.
  - PARTS ARE NOT TO BE MATED OR UNMATED WHILE CIRCUITS ARE LIVE.
  - FOR HIGH VIBRATION APPLICATIONS, MOLEX STRONGLY RECOMMENDS THE USE OF NYE LUBRICANT NYOGEL 760G ON THE MATING SURFACES OF THE TERMINAL.



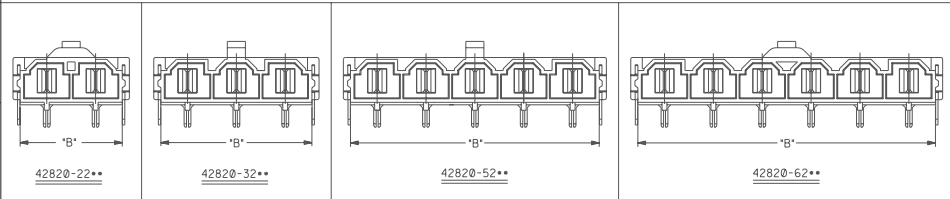
HEADER WITH RT. ANGLE TERMINAL & CLIP  
ISO VIEW



- P.C. BOARD THICKNESS
- .062/(1.57) NOMINAL
  - .093/(2.36) NOMINAL
  - .125/(3.18) NOMINAL



RECOMMENDED P.C. BOARD PLATED-THRU HOLE LAYOUT  
(4 CKT. SHOWN FOR REF.)



Mates with:  
42816 Series SingleRow  
Receptacle Housing

REV.	DESCRIPTION
C1	ADDED PCB EDGE UCR 1999-0815 COMENCI 99-05-28
C	ADDED NOTE 8 UCR 1999-0195 ELHAG 98-09-28
B	3.00 WAS 2.90 DIA ECN U70633 POLGAR 96-12-03
A	REV. B FINAL REEL ECN U70468 POLGAR 96-10-23
3	ADDED DIM. "C" ECN U6466 POLGAR 96-09-12
2	8.00 WAS 6.00 ECN U60950 GEP 2-12-96
1	NEW X-RELEASE ECN U60740 95-01-04 KSM

100% DIM. BY PLOT

CONNECTIONS SHOWN METRIC DIM. UNLESS OTHERWISE SPECIFIED TERMINALS INCLUDE # 1-17

PLATE #	THICKNESS	INDI.	METRIC
1	---	2.25	---
2	---	2.40	---

RIGHT ANGLE HEADER ASSEMBLY (MINI-FIT SENIOR SERIES)

MOLEX INCORPORATED

SEE CHART SDA-42820-0002

DATE: 196/01/04

NO. P.S. 1